

- ① UNLOCK BODY HOOKS & LOWER CENTER STOPS
- ② LOWER TRACTOR & TRAILER AIR SUSPENSION
- ③ BACK STRAIGHT UNDER BODIES AND SET TRACTOR BRAKES

- ⑦ RELEASE TRAILER BRAKES

- ⑨ RAISE TRACTOR AIR SUSPENSION

FOLD AWAY LEGS ⑩  
FOLD AWAY ALL (8) LEGS AS YOU MAKE YOUR WAY BACK AROUND.

- ⑭ PLUG IN LIGHT PLUG

- ⑬ LOCK FRONT HOOKS

- ⑥ RAISE CENTER STOPS

RAISE CENTER STOPS ⑤

- ⑧ RAISE TRAILER AIR SUSPENSION

- ⑮ SET TRAILER TO "RIDE HEIGHT"

- ⑯ DOUBLE CHECK BODY LOCKS

- ⑪ LOCK REAR HOOKS

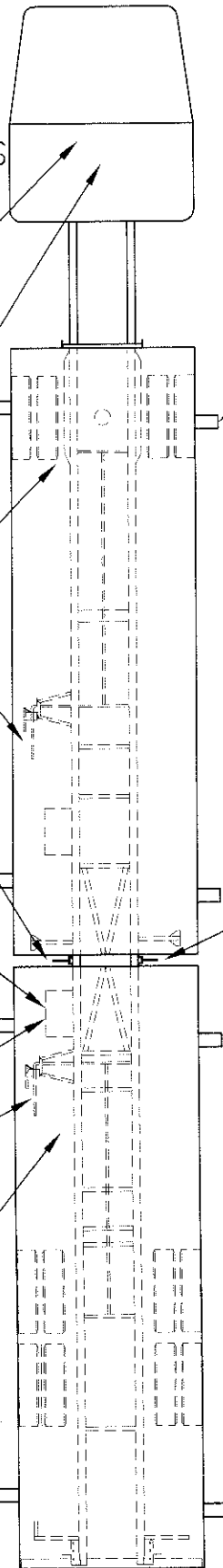
- ⑰ SET TRACTOR TO "RIDE HEIGHT"

- ⑫ PLUG IN LIGHT PLUG

**WARNING!!!**

DO NOT MOVE THIS VEHICLE WITHOUT CHECKING ALL BODY LOCKING HOOKS AND SAFETY LATCHES

- ④ CHECK THAT TRAILER IS CENTERED UNDER BODIES



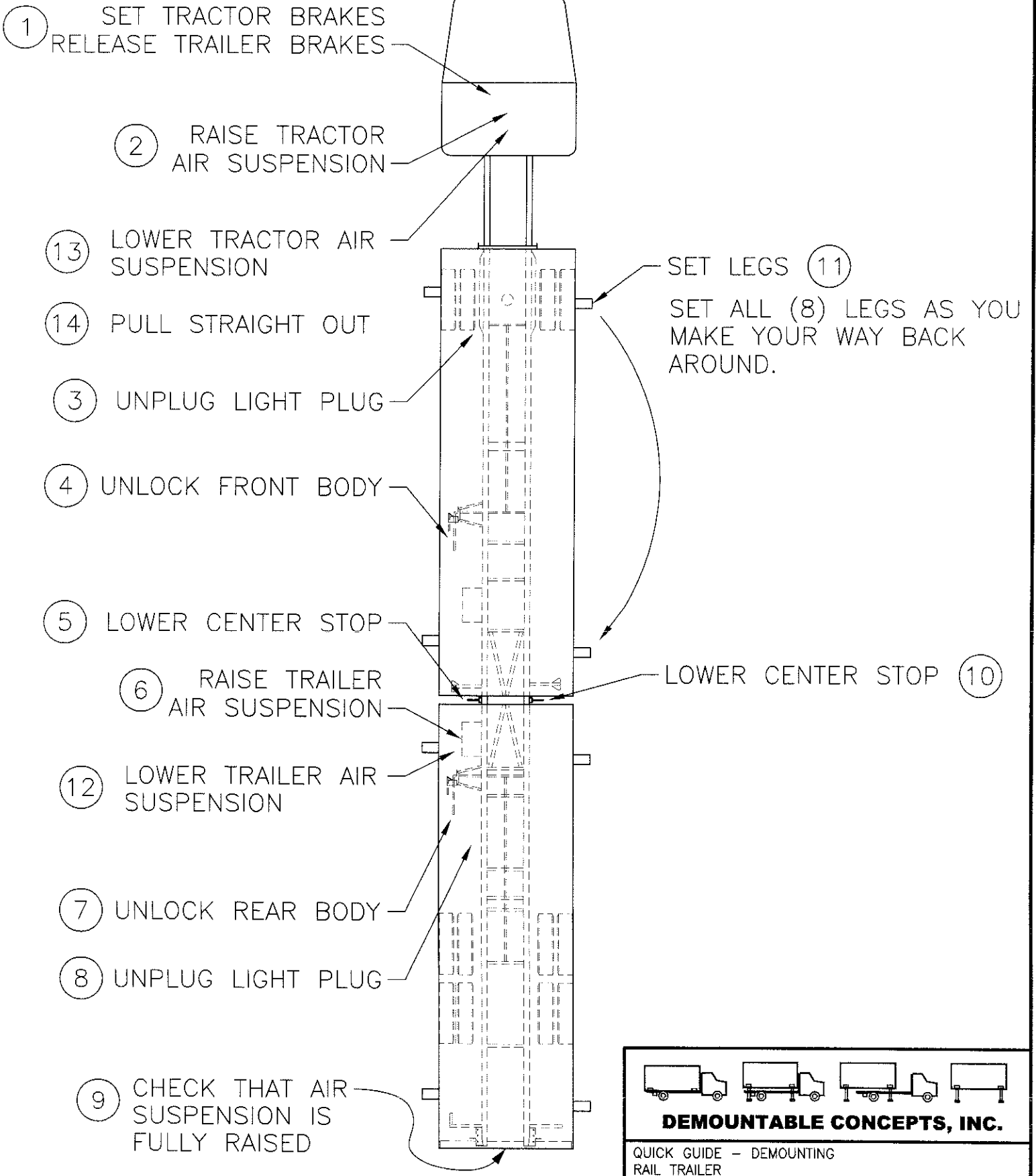
**DEMOUNTABLE CONCEPTS, INC.**

QUICK GUIDE - MOUNTING  
RAIL TRAILER  
FOR:

SIZE	REV. NO.	PART NO.
A	1	MOUNTING

COPYRIGHT 2004 DEMOUNTABLE CONCEPTS, INC.  
THIS DRAWING AND THE DATA SHOWN IS PROPRIETARY AND CONFIDENTIAL. DO NOT USE OR REPRODUCE FOR ANY PURPOSE WITHOUT THE WRITTEN CONSENT OF DEMOUNTABLE CONCEPTS, INC.

DATE	-		JOB NO.
DRAWN	KP	DATE	7/14/04
SCALE		JOB NO.	quick guide
		SHEET	SHEET 1 OF 1



COPYRIGHT 2004 DEMOUNTABLE CONCEPTS, INC.  
THIS DRAWING AND THE DATA SHOWN IS PROPRIETARY AND CONFIDENTIAL. DO NOT USE OR REPRODUCE FOR ANY PURPOSE WITHOUT THE WRITTEN CONSENT OF DEMOUNTABLE CONCEPTS, INC.

<b>DEMOUNTABLE CONCEPTS, INC.</b>			
QUICK GUIDE - DEMOUNTING RAIL TRAILER			
SIZE A	REV. NO. 0	PART NO. DEMOUNTING	
DRAWN ASP		DATE 7/11/02	JOB NO.
SCALE		DWG. NO.	SHEET SHEET 1 OF 1