

# DEMOUNTABLE CONCEPTS, INC.

## BODY BUILDER INSTRUCTIONS

1. **DO NOT** build any part of the body in front of front body plates (these are the triangular steel plates at the front of the body). Install front crossmember with enough clearance for front wall and aluminum extrusion to fit behind front body plates. Be sure front crossmember is installed square with body base frame (Ref. drawing DCI-BB-100). **Building the body in front of the front plates will result in a body that does not lock onto the customer's truck.**
2. Wire body lights to light plug installed onto base frame. Light plug wire terminates at front of body base frame on the driver side. Wire dome and marker lights to light plug black and white wires. Attach the green ground wire from the plug to the marker light ground wire or screw it to the body base frame. Secure all excess wires and store in body long rails (Ref. drawing DCI-BB-101).
3. **DO NOT** screw floor to legs or leg box top plates.
4. Bolt aluminum side rails to base frame through pre-drilled holes.
5. Cut aluminum rub-rails at legs. Aluminum must be flush with leg housing. Do not allow aluminum to hang over into leg housing. Secure aluminum bottom rail to the base frame at each leg opening with screws or ¼" monobolts (Ref. drawing DCI-BB-103).
6. **DO NOT** undercoat body long rails. Paint this area black as needed (Ref. drawing DCI-BB-104).
7. Check that all lights work prior to delivery. Call and request a test plug.

Please call our plant if you have any questions regarding this base frame.

### **Demountable Concepts, Inc.**

112 Maple Leaf Court

Glassboro, New Jersey 08028

800.254.3643 toll free

856.863.0900 local

856.863.6704 fax

info@demount.com email

www.demount.com web

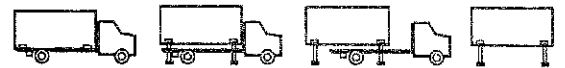
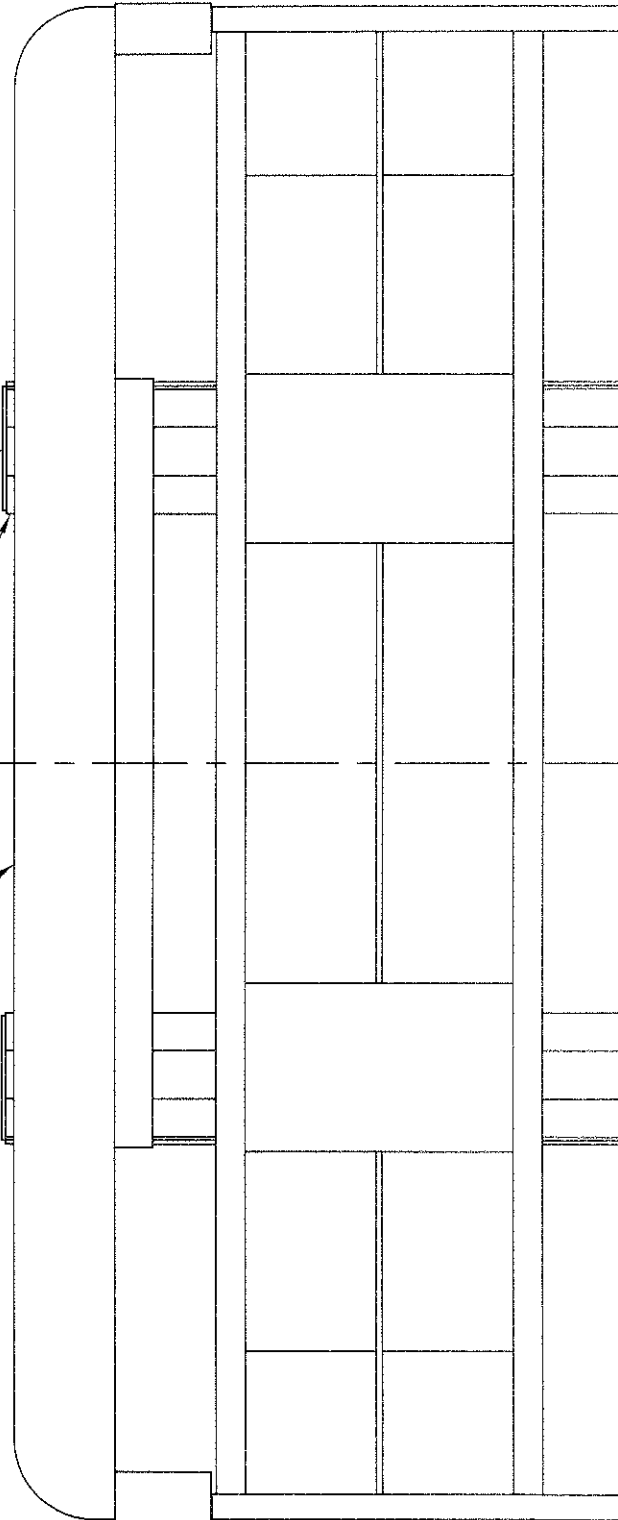
BODY MUST NOT EXTEND IN FRONT OF THESE FRONT PLATES

LEAVE CLEARANCE FOR FRONT WALL AND RUB RAIL HERE

FRONT CROSSMEMBER INSTALL SQUARE TO BASE FRAME

Q BODY

**FRONT**



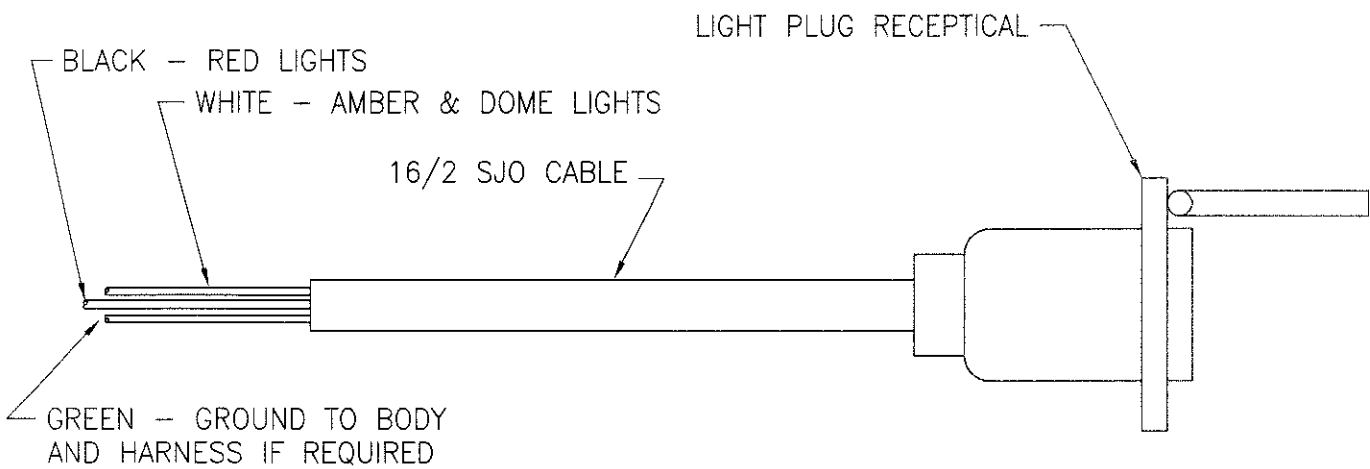
**DEMOUNTABLE CONCEPTS, INC.**

FRONT OF BODY INSTALLATION  
 BODY BUILDERS INSTRUCTIONS  
 FOR:

COPYRIGHT 2005 DEMOUNTABLE CONCEPTS, INC.

THIS DRAWING AND THE DATA SHOWN IS PROPRIETARY AND CONFIDENTIAL. DO NOT USE OR REPRODUCE FOR ANY PURPOSE WITHOUT THE WRITTEN CONSENT OF DEMOUNTABLE CONCEPTS, INC.

SIZE	REV. NO.	PART NO.
A		DCI-BB-100
DRAWN	DATE	CHECKED
KEVIN PERKINS	6/20/01	
SCALE	CAD#	SHEET 1 OF 1
1"=12"	DCI-BB-100	

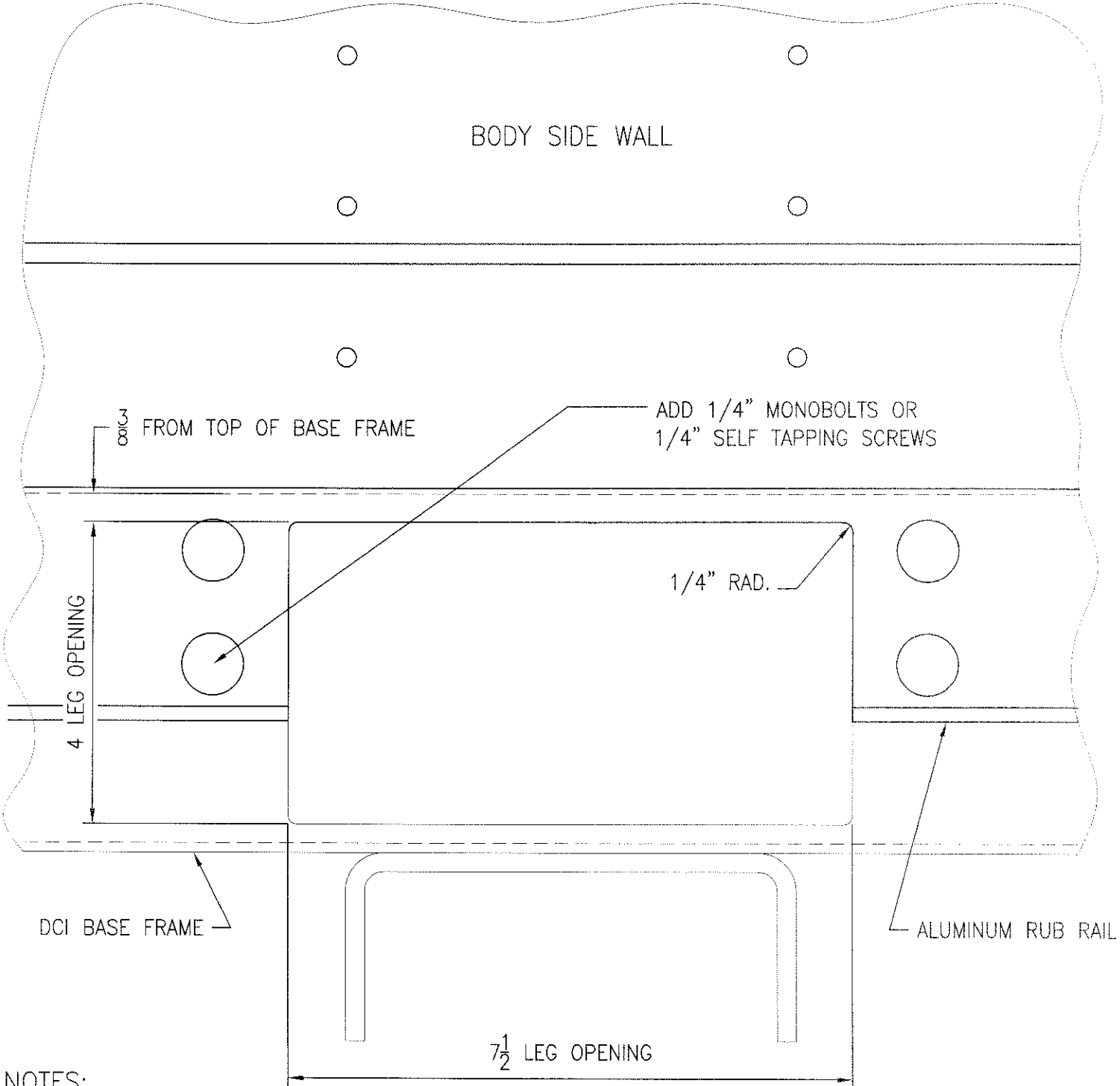


NOTE: FOR BODIES WITHOUT FRONT DOOR, CONNECT BLACK AND WHITE WIRES TOGETHER AND CONNECT TO MARKER LIGHTS AND DOME LIGHTS.

COPYRIGHT 2005 DEMOUNTABLE CONCEPTS, INC.  
 THIS DRAWING AND THE DATA SHOWN IS PROPRIETARY AND CONFIDENTIAL. DO NOT USE OR REPRODUCE FOR ANY PURPOSE WITHOUT THE WRITTEN CONSENT OF DEMOUNTABLE CONCEPTS, INC.

<b>DEMOUNTABLE CONCEPTS, INC.</b>			
LIGHT PLUG RECEPTICAL WIRING DIAGRAM			
BODY BUILDER INSTRUCTIONS			
FOR:			
SIZE	REV. NO.	PART NO.	
A		DCI-BB-101	
DESIGN	DATE	JOB NO.	
KEVIN PERKINS	6/27/01		
SCALE	CAD#	SHEET 1 OF 1	
NONE	DCI-BB-101		

BODY SIDE WALL



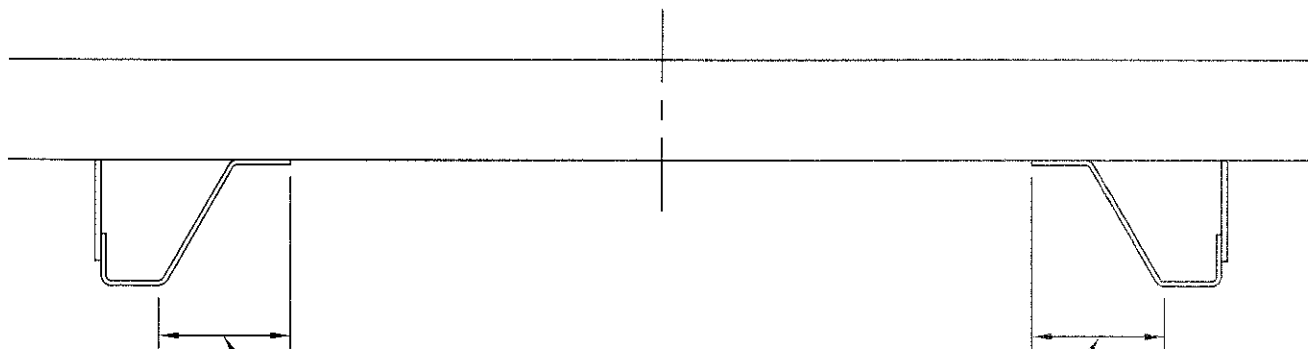
NOTES:

- 1) NOTCH BOTTOM RAIL TO DIMENSIONS SHOWN.
- 2) NOTCH TO BE LOCATED AT EACH LEG AREA OF THE DCI BASE FRAME.
- 3) ALUMINUM MUST NOT PROTRUDE INTO LEG OPENING.
- 4) ADD 1/4" MONOBOLTS (OR EQUIVALENT) TO AREA SURROUNDING LEG OPENING.

COPYRIGHT 2005 DEMOUNTABLE CONCEPTS, INC.

THIS DRAWING AND THE DATA SHOWN IS PROPRIETARY AND CONFIDENTIAL. DO NOT USE OR REPRODUCE FOR ANY PURPOSE WITHOUT THE WRITTEN CONSENT OF DEMOUNTABLE CONCEPTS, INC.

<p><b>DEMOUNTABLE CONCEPTS, INC.</b></p>			
CUT ALUMINUM RUB RAIL AT LEG HOUSING BODY BUILDERS INSTRUCTIONS FOR:			
SIZE	REV. NO.	PART NO.	
A	0	DCI-BB-103	
DRAWN	DATE	REV. NO.	
KEVIN PERKINS	6/27/01		
SCALE	CAD#	SHEET	
6"=12"	DCI-BB-103	1 OF 1	



DO NOT UNDERCOAT LONG RAILS IN THIS AREA

COPYRIGHT 2005 DEMOUNTABLE CONCEPTS, INC.

THIS DRAWING AND THE DATA SHOWN IS PROPRIETARY AND CONFIDENTIAL. DO NOT USE OR REPRODUCE FOR ANY PURPOSE WITHOUT THE WRITTEN CONSENT OF DEMOUNTABLE CONCEPTS, INC.



**DEMOUNTABLE CONCEPTS, INC.**

UNDERCOATING INSTRUCTIONS  
 BODY BUILDERS INSTRUCTIONS  
 FOR:

SIZE	REV. NO.	PART NO.
A		DCI-BB-104
DRAWN	DATE	JOB NO.
KEVIN PERKINS	6/27/01	
SCALE	CAD#	SHEET 1 OF 1
1 1/2"=12"	DCI-BB-104	